

NOTICE TO MARINERS

Issue date: 17/04/2025

1. Replacement of Special Mark Buoy with West Cardinal Buoy

Please be advised that Moray Offshore Windfarm (East) Limited (Moray East) are completing works to replace the Special Mark Buoy (SMB) which is in place to mark the Met Mast Gravity Base Structure (GBS). The SMB will be replaced with a West Cardinal Buoy which will sit 100 m to the West of the GBS. The work scope is due to be completed between 3rd May – 10th May 2025 inclusive of travel to and from the site. The target location for the West Cardinal Buoy is as per coordinates in Table 2.

Table 1: Current Special Marker Buoy Location

Coordinates			
WGS84		WGS84 30N	
Latitude	58° 10.927" N	Easting (m)	510573.8151
Longitude	2° 49.212" W	Northing (m)	6449000.1612

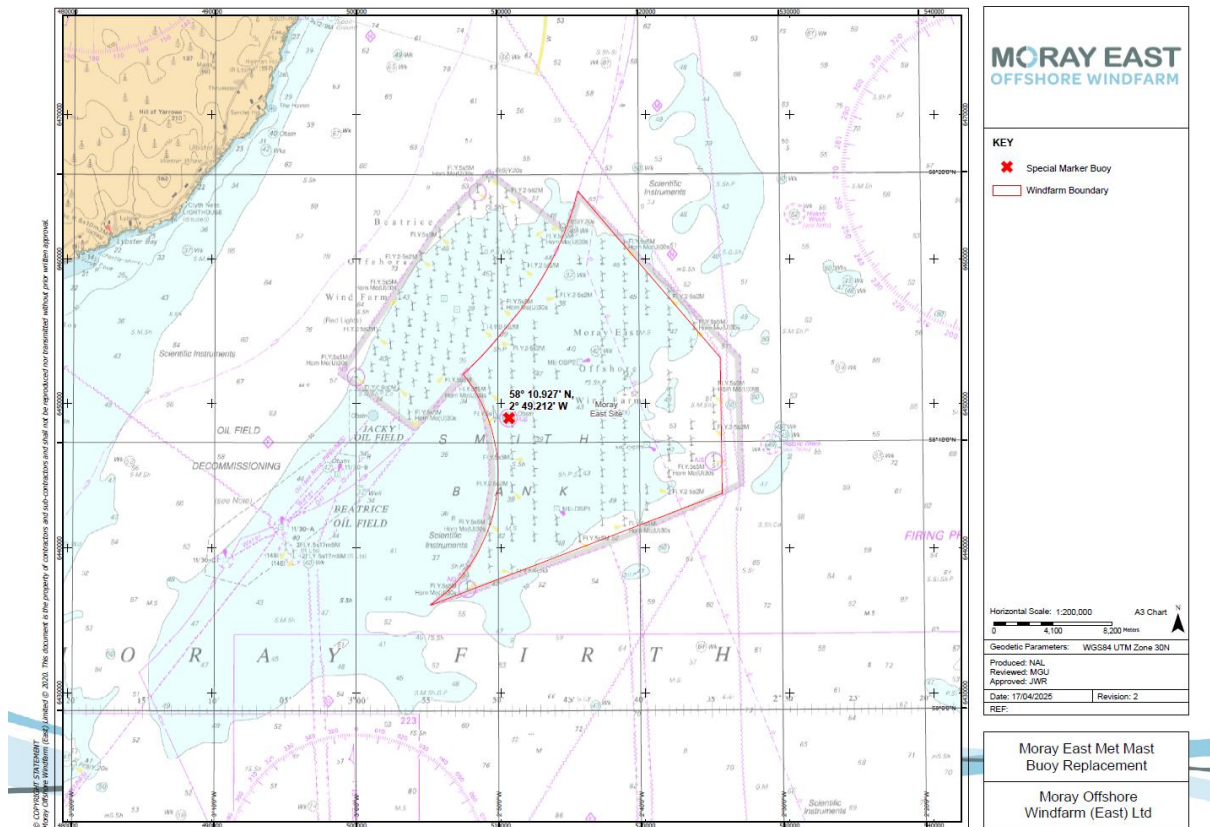


Figure 1: Current Special Mark Buoy Location

Table 2: Proposed West Cardinal Buoy Location

Coordinates			
WGS84		UTM 30N (CM 3°W)	
Latitude	58° 10' 55.714" N	Easting (m)	510 451.67
Longitude	002° 49' 20.197" W	Northing (m)	6 449 002.75
		Water Depth	40 m

1. General Safety Advice

8460001-PC0010-MWE-NTM-0104

Please be aware that, during the activities, by virtue of its mode of operation the vessel (Isle of Jura) will be Restricted in her Ability to Manoeuvre (RAM) as defined under COLREGs (International Regulations for Preventing Collisions at Sea 1972, Rule 3). Masters of vessels are therefore requested to maintain their vessels and gears at a minimum safe passing distance from the vessel of 500 metres when it is undertaking work and showing the appropriate shapes and lights in accordance with COLREGs Rule 27.

In order to not compromise the safety of the Vessel, their crew, and their ability to undertake its contracted works, fishermen who have static fishing gears deployed within 500 m from the Special Mark Buoy and Proposed Location for the West Cardinal buoy (see Table 1 and 2 and Figure 1) are requested to provide the coordinates of such deployed gears in DMS and details of whether the surface markers used are visible at all states of visibility to Alex Winrow-Griffin (Brown & May Marine) using the contact information below (Section 58 of the Merchant Shipping Act 1995).

Fishermen who have static gears deployed beyond 12 nm are reminded that static gear must be marked in accordance with Commission Implementing Regulation (EU) No. 404/2011 (<https://www.gov.uk/guidance/markings-of-fishing-gear-retrieval-and-notification-of-lost-gear#marking-of-fishing-gear>)

Table 3: Vessel details

Isle of Jura	
<u>Call Sign</u>	MFFY6
MMSI:	232021966
On Board Contact:	Email – jura@seafastltd.co.uk Tel- +44 7936910623 Starlink tel- +44 1349320677
Onshore Representative:	Bobby Mitchell (operations manager) Tel: +447936911259 Email : bobby.mitchell@seafastltd.co.uk Dave McNaughtan (General Manager) Tel: +447934358881 Email: dave@seafastltd.co.uk



2. Contact details

8460001-PC0010-MWE-NTM-0104

The following contact can provide more information if required. Please note that specific queries can also be addressed to the relevant vessel or shore-based representative.

CONTACT DETAILS	
Marine Coordination Centre 24/7 Peter Garden – Lead Marine Coordinator Email peter.garden@oceanwinds.com Tel : +44 07884630427	For fisheries related matters Alex Winrow-Giffin – Brown and May Marine Ltd. Email: alex@brownmay.com Tel : +44 1379 872148 / +44 7760 160039